



Alcantarilha **325,000 €**

Ref: SV1015

This small project of 6 brand new contemporary townhouses are under construction. The linked villas have 3 bedrooms and 3 bathrooms with a construction area of 156 m² and a plot area of 251 m². The property consists of a ground floor and first floor (duplex) on a great location in Silves overlooking the golf course. Located in a quiet area surrounded by nature on the outskirts of the city.

Also within 10 minutes drive you are in Silve's historic center with his small streets and Portuguese lifestyle. Beaches and shopping mall are 15 minutes drive.

The linked villas, in total 6 units, have a ground floor consists of a spacious and light living room, luxurious fully equipped kitchen, laundry room, complete bathroom and bedroom. The first floor consists of 2 bedrooms en suite. You will have a garden and outside parking in front of the house.

Only 100 meters away from the Golf course and 5 km from Alcantarilha town with all amenities and only 10

 156sm	 251sm	 3	 3	 NO
--	--	--	--	---

km from the coast and 40 km from Faro airport.

A must viewing for someone who wishes to own a property in a quiet area surrounded by nature and a golf course.

Construction will be finished around May/June 2020.

short description of finishing list

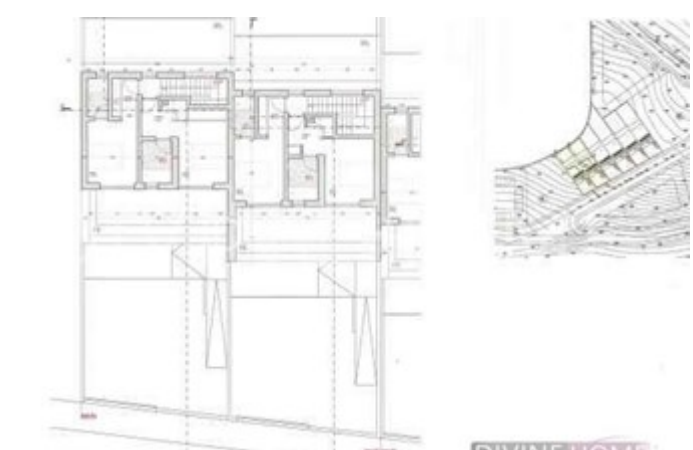
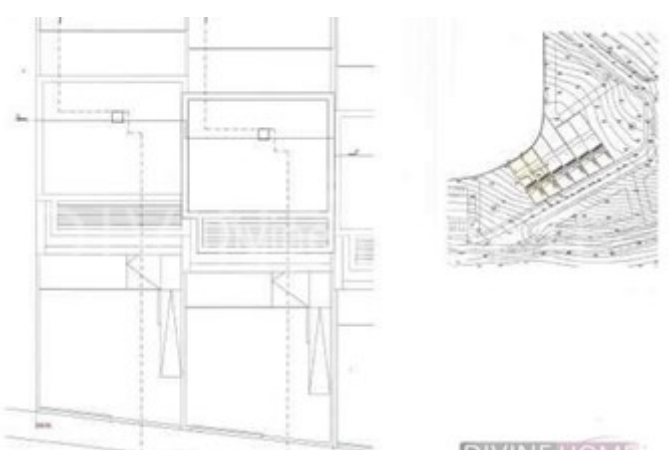
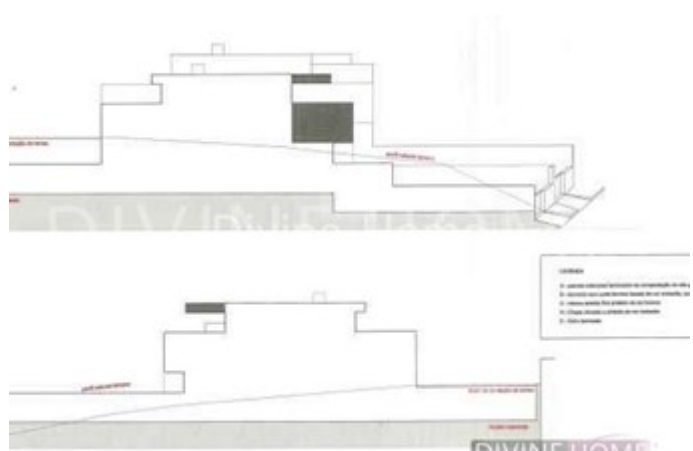
- Modern and contemporary look and feel
- Complete bathrooms
- Complete kitchen
- Airconditioning
- Solar panels
- Double glazing aluminum windows
- Wooden wardrobes with sliding doors
- Interior wooden doors
- Laminated glass on balconies
- With painted and stucco walls
- Plasterboard ceilings
- Energy label A

Book your visit now!



DIVINE HOME[®]

IMOBILIÁRIA • REAL ESTATE



DIVINE HOME[®]

IMOBILIÁRIA • REAL ESTATE



DETAILS

Built year: 2020

Terrace

Garage

Roof terrace

Solar system

Storage / utility room

Countryside views

Golf views

Urbanization view

Garden view

Security alarm

Energy certificate : A

Mains water

Air conditioning

Garden

Golf : 1 min.

Beach : 15 min.